

:LIGHTHOUSE:

FOR THE BLIND AND VISUALLY IMPAIRED



Photo caption: A group of sighted and blind people with outstretched white canes cross Hyde Street in San Francisco en route to City Hall. Photo by Sarika Dagar

ANNUAL
REPORT | 2019

MISSION

Founded in 1902, [LightHouse for the Blind and Visually Impaired](#) promotes the independence, equality and self-reliance of people who are blind or have low vision.

VISION

We offer blindness skills training and relevant services such as access to employment, education, technology, information, recreation, transportation and the environment. We also pursue the development of new technology, encourage innovation, and amplify the voices of blind individuals around the world.

VALUES

advocacy
collaboration
employment
innovation
equality
literacy
education
independence
community

Photo caption: Photo of the LightHouse building and its entrance under a new, illuminated sign that spells LIGHTHOUSE. Students gather underneath. Photo by Sarika Dagar

Board of Directors

Chris Downey – Chair

Architect, Architecture for the Blind

Lisa Carvalho –Vice Chair

Attorney

Gena Harper – Treasurer

Senior Vice President, Morgan Stanley

Geoffrey Murry - Secretary

Attorney, Ad Astra Law Firm

Laura Allen

Accessibility Program Manager, Google

Jennison Mark Asuncion

Engineering Manager for Accessibility, LinkedIn

Joseph Chan

Chief Financial Officer (retired), Association of Bay Area Governments

Michael Dellar

Co-Founder, President & CEO, One Market Restaurant

Chancey Fleet

Assistive Technology Coordinator, New York Public Library

Eric Mah

Financial Professional

Michael Nuñez

Attorney, Rosen Bien Galvan & Grunfeld, LLP

Luciana Profaca, Ph.D.

Chief Deputy (retired), California Department of Rehabilitation

Sharon Z. Sacks, Ph.D.

Superintendent (retired), California School for the Blind

Michael Shebanek

Head of Accessibility, Facebook

Yue-Ting Siu, TVI, Ph.D.

Professor, San Francisco State University

Ahmet Ustunel

TVI, San Francisco Unified School District

Executive Leadership

Bryan Bashin

CEO

Scott Blanks

Senior Directors, Programs

Brandon Cox

Senior Directors, Operations

Locations

LightHouse for the Blind and

Visually Impaired (Headquarters)

San Francisco, CA

LightHouse Marin

San Rafael, CA

LightHouse East Bay,

Ed Roberts Campus

Berkeley, CA

LightHouse North Coast

Eureka, CA

Enchanted Hills Camp for the Blind

Napa, CA

LightHouse Industries

Sirkin Center

San Leandro, CA

A LETTER FROM OUR BOARD CHAIR

Dear LightHouse and Enchanted Hills Camp Community,

I'm pleased to introduce the LightHouse for the Blind 2019 Annual Report, highlighting our accomplishments over a year of substantial growth. As someone who has been on the LightHouse Board for a few years and has had a full career as a blindness educator, and as a woman who has had low vision all my life, I am proud to have recently begun my tenure as the Chair of the Board of Directors. Many of you know me as the previous Superintendent of the California School for the Blind. I know how vital it is for blind people to connect with others and meet mentors. Everything LightHouse does, from cooking classes to braille instruction to providing counseling to offering boot camp for people who are newly blind, is premised on joining a community of support, learning and aspiration.

There was a theme of geographic expansion this year. In response to a need for services where people reside, we opened a new LightHouse East Bay office with more space, additional staff and extended programming. There is a receptionist stationed there too, to help people feel welcome as they take the big step towards gaining blindness and low vision skills.

Our Employment Immersion Program began a series of job training workshops with an option to participate remotely. These students learn critical skills to land jobs in a competitive job market: a crucial program when 56% of working age blind adults are unemployed.

We also expanded our reach by putting our retail store, Adaptations, online at adaptations.org. There you'll find over 800 products, from magnifiers to white canes to individualized tactile maps of any neighborhood.

At Enchanted Hills Camp, we hosted ten sessions for blind campers in the summer of 2019, including the largest teen camp ever. Since the ravages of the 2017 wildfires, our campers are housed in temporary bungalows and use portable restrooms, while we create a master plan, secure building permits, and seek funding to rebuild the entire camp.

National media highlighted our unparalleled programs with a full feature interview on the television show 60 Minutes with legendary host Lesley Stahl and LightHouse's Immediate Past Board Chair Chris Downey, a blind architect. And we were delighted that San Francisco Mayor London Breed joined us to celebrate White Cane Day on October 15th.

Looking ahead, I'm excited about Access Technology's work with many of the largest (and innovative) tech companies to ensure that blind people across the globe are able to use the technology of the future. The Holman Prize for Blind Ambition (HolmanPrize.org) is a project I've

been especially involved with. The Prize continues to encourage blind people from all continents to dream big and live their lives to the fullest, while simultaneously challenging the sighted world to question their assumptions about the capabilities of people who are blind.

Finally, Enchanted Hills will celebrate its 70th Anniversary in 2020. We are seeking leaders in the community to step up and be a part of the campaign.



The transformative programs of the LightHouse and Enchanted Hills are possible because of wide and committed support from the greater community. Thank you.

Best Wishes,

Sharon Zell Sacks, Ph.D.

LightHouse Board Chair, 2020

Photo caption: LightHouse Board Chair Sharon Sacks stands holding the Paul Yarwood Memorial Award presented to LightHouse by the California Optometric Association.

OUR PROGRAMS

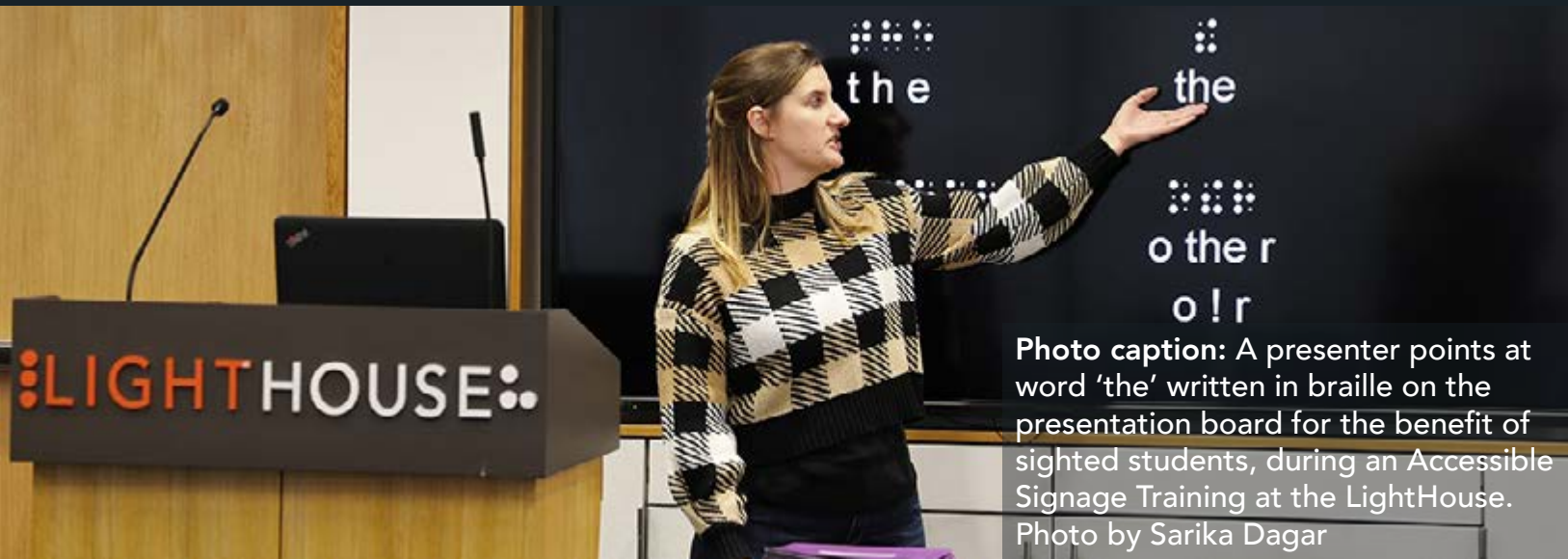


Photo caption: A presenter points at word 'the' written in braille on the presentation board for the benefit of sighted students, during an Accessible Signage Training at the LightHouse. Photo by Sarika Dagar

ACCESS TECHNOLOGY - The Access Technology Department facilitates the use of accessible technology among people of all ages and levels of expertise. We work with companies on design consulting, functional accessibility review, and user testing sessions.

ADAPTATIONS STORE - Located on the 10th Floor of our San Francisco headquarters, as well as online, Adaptations is the only place in Northern California with a comprehensive offering of tools, technology and other solutions for blind people.

COMMUNITY SERVICES – Social outings, professional mentoring, health education, nutrition, yoga, meditation, knitting, rafting, camping, accessible movie nights, arts, crafting, cooking and fitness programs.

PSYCHOLOGICAL COUNSELING SERVICES – Available in individual, couple and group settings, LightHouse counseling services support a student's overall well-being.

DEAF-BLIND SERVICES – Deaf-blind students benefit from training, resources and free technology. In 2019, LightHouse supplied deaf-blind students with 450 pieces of equipment valued at \$268,008.

EMPLOYMENT IMMERSION – Blind and low vision jobseekers receive personalized training to learn how to identify job openings, network, interview and secure meaningful employment. More than 100 graduates have secured employment since the program began in 2011.

OUR PROGRAMS

ENCHANTED HILLS CAMP AND RETREAT – The oldest camp for the blind in the American West, hosting campers since 1950.

LIGHTHOUSE INDUSTRIES SIRKIN CENTER – 75 percent of all direct labor at our light manufacturing plant in San Leandro is provided by workers who are blind or have low vision.

LIGHTHOUSE LABS – A think-tank for technologists, corporations and designers to meet regularly with blind scientists, engineers and savvy consumers.

THE MEDIA AND ACCESSIBLE DESIGN LAB (MAD LAB) – This team of designers produces tactile graphics, maps, 3D educational objects, ADA signage, braille and more. MAD Lab designers interpret museum exhibits, ensure universal access in construction and produce creative signage, maps, recordings or braille to deliver information to all.

THE JOSEPH CHAN LOW VISION OPTOMETRY CLINIC – In partnership with the UC Berkeley School of Optometry and located within LightHouse Headquarters, this is a low vision and primary care eye clinic.

VOLUNTEER SERVICES – Volunteers assist blind people one-on-one with reading mail, grocery shopping, and athletic endeavors; help maintain Enchanted Hills Camp; and provide administrative support to keep LightHouse running smoothly.

YOUTH PROGRAMS – LightHouse offers activities for blind and low vision youth, including STEM education, outdoor adventures and a monthly, mentor– led employment series that encourages blind teens to prepare for professional success.

BLIND AND LOW VISION SKILLS – Training in low vision and blindness skills, including orientation and mobility, braille, and independent living skills.

LightHouse Student Profile: Virginia Prince, age 35



"I have a BA in Psychology with honors from Mills College and a certificate in HR from UC Berkeley.

I've worked in non-profits mostly since college doing disability advocacy, people and leadership development, human resources, and community organizing."

Photo caption: Portrait of Virginia Prince, Employment Immersion student.

I was connected to the LightHouse Employment Immersion program through the Department of Rehabilitation (DOR). I was fairly confident of my employment goal and my experiences going into the program. I enjoyed the day they had volunteers from Dolby come and do mock interviews. The whole team was helpful in the ways they could be. I benefited from Kate taking me to an HR networking event. Marc was helpful in talking through the blindness related application issues like when to disclose that I am partially blind and need accommodation. Ed helped me learn more about the Access to City Employment (ACE) program that San Francisco offered, which is how I

ended up landing the job with the Department of Public Health.

I now work as a Reasonable Accommodation Coordinator for the City of San Francisco. I think my disability has been an asset to my role in assisting others to obtain the accommodations they need because I have had to advocate for myself my whole life! My supervisor, Hallie Albert, has been very supportive and understanding of blindness related tools like JAWS screen readers and devices like CCTV's. It feels great to have gotten a position where my skills and abilities are valued as diversity and not as a strange nuisance."

95% students say that LightHouse is useful and relevant in meeting their interests and needs.

84% of our students say that they are successfully using what they learned at LightHouse.

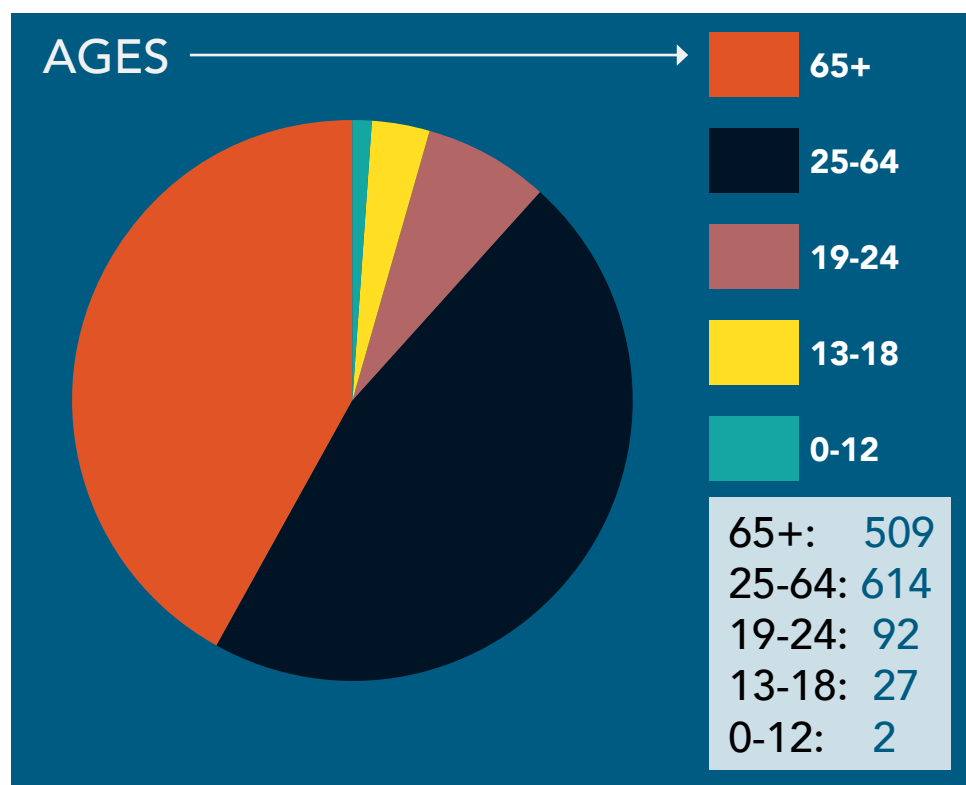
78% students found LightHouse staff to be professional and knowledgeable.

2019 Impact by the Numbers

**BLIND
STUDENTS:
1242**



**30,491.95
hours**



PROGRAM HOURS

6,181.90
adults & seniors

8,969
youth

4,552.50
orientation & mobility

765.75
braille

448.25
psychological services and
counseling

981
rehabilitation (CVCL, ILS, Low
Vision Clinic)

897.25
employment immersion

1,866.05
student support
(advocacy, family, referrals,
transportation)

3,765.25
access technology

2,065
deaf-blind

**Grand Total:
30,491.95 hours**



[Photo caption: Four star Charity Navigator and Platinum Guide Star logos above.]

VOLUNTEERS

19,386
hours

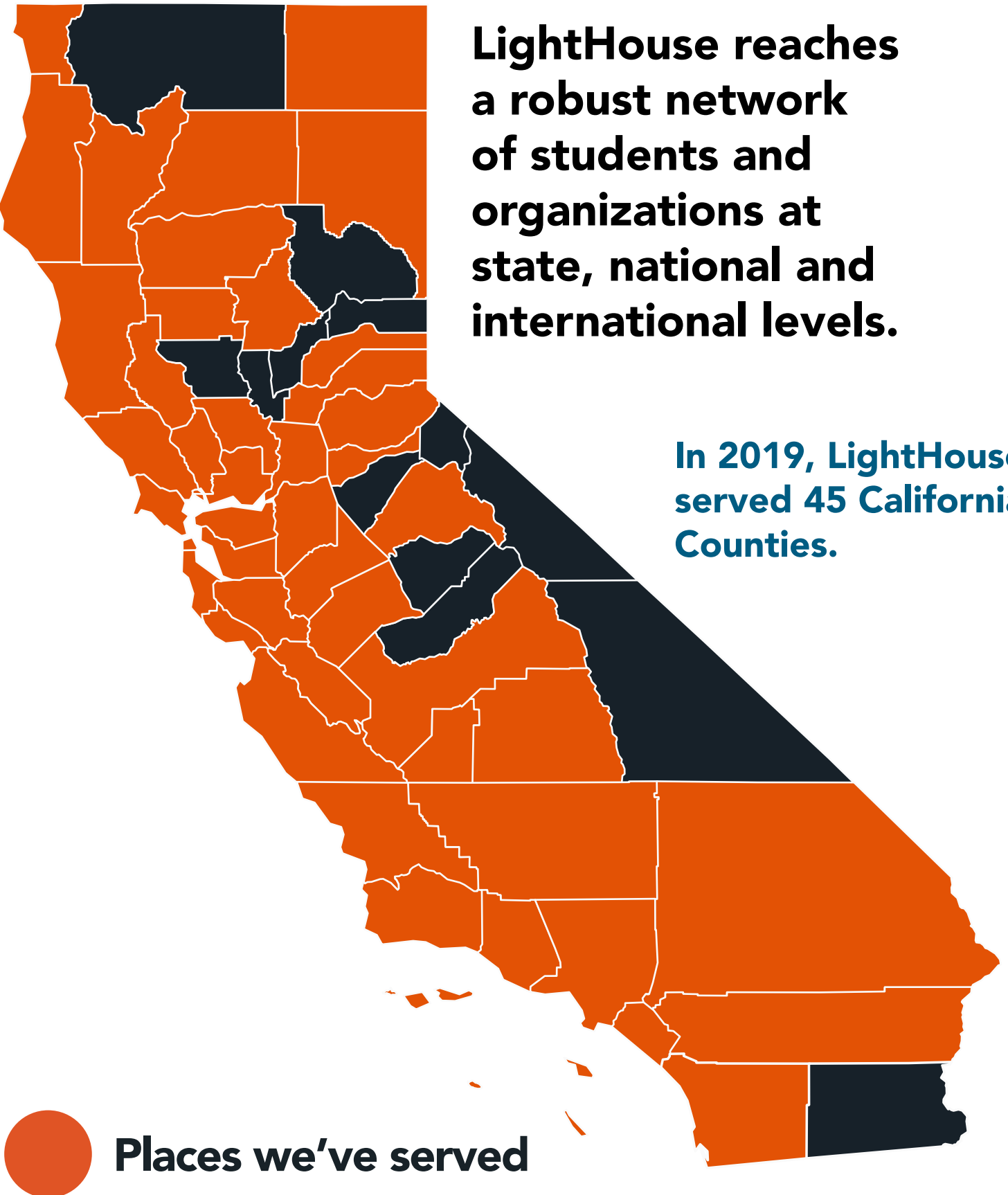
28
groups



2019 OUTREACH

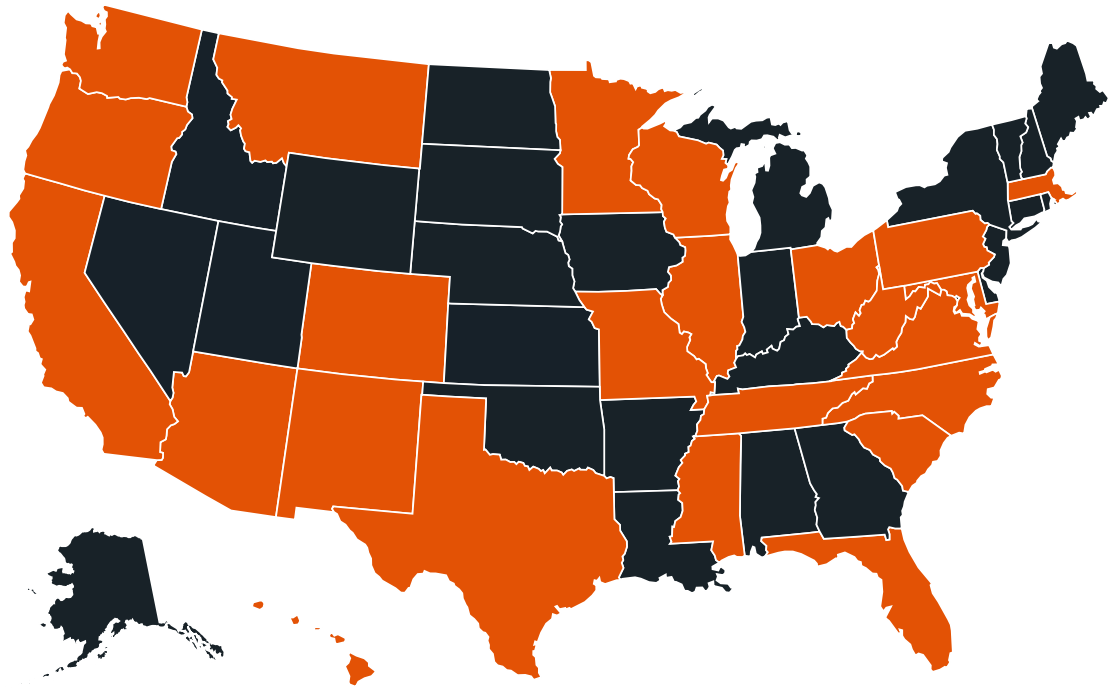
LightHouse reaches a robust network of students and organizations at state, national and international levels.

In 2019, LightHouse served 45 California Counties.

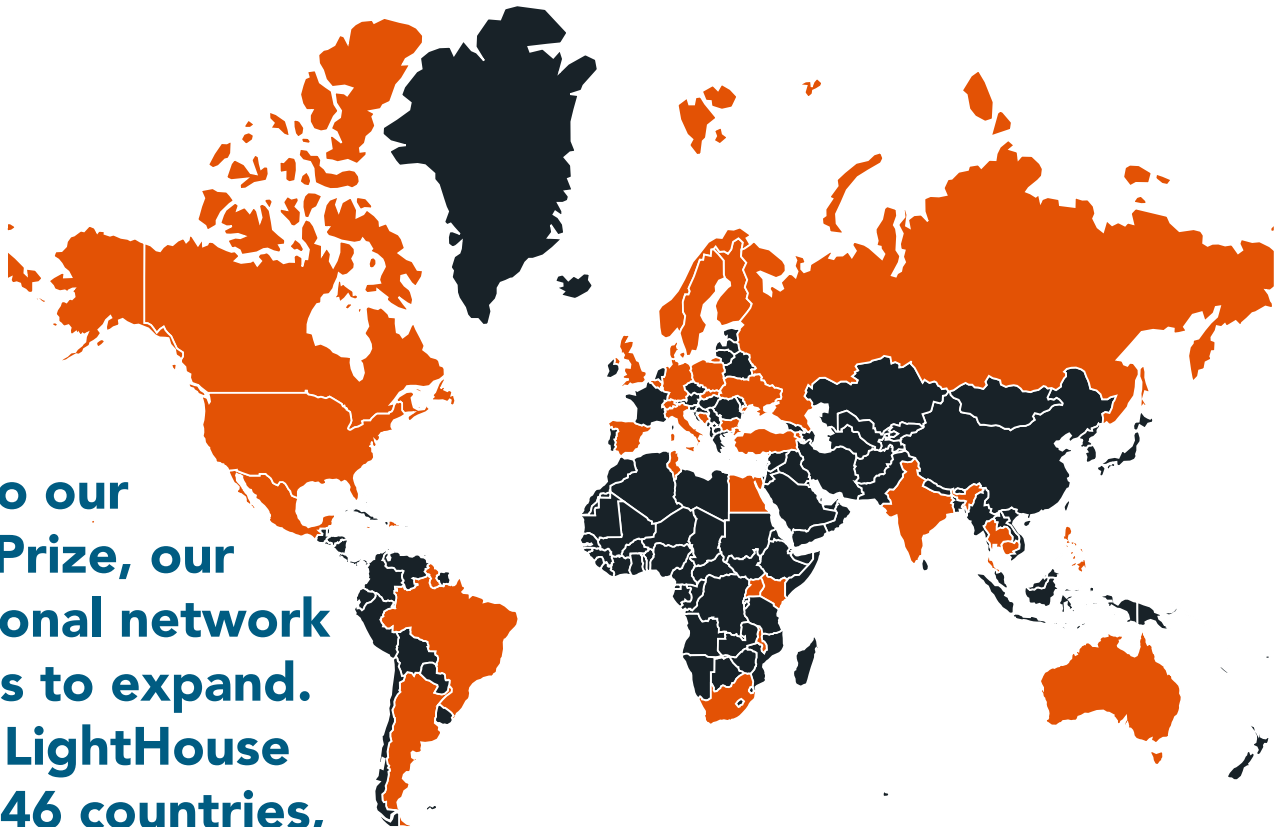


2019 OUTREACH

Our national reach grows. In 2019, LightHouse served students from 20 states



**Thanks to our
Holman Prize, our
international network
continues to expand.
In 2019, LightHouse
reached 46 countries,
including Fulbright
scholars from Poland
and Hungary.**



Donors: The Bunt Family



"Contributing financially to Enchanted Hills is something our hearts and minds are compelled to do, since camp has given our family so much. It feels like a place where we belong."

Photo caption: The Bunt Family sits in front of the historic Enchanted Hills Camp sign.

Henry Bunt, age 18, and his parents attended Family Camp at Enchanted Hills, and then he and his mom returned as volunteers. At first, Henry had apprehensions about going to camp. He wasn't super outdoorsy and was afraid he wouldn't like being out in nature. Prior to Enchanted Hills, Henry didn't know anyone his age with low vision, and he wasn't sure he wanted to be immersed. But Henry soon grew to love the experiences of Enchanted Hills. He met college-educated, employed blind and low vision counselors who served as examples of what Henry's future could be like. He learned archery, tried horseback riding and made good friends. And last summer Henry volunteered in the kitchen. He said, "That was a good experience. It was my first step towards having an actual job, and

most things I was worried about ended up not being a problem at all."

Henry's mom and dad, Jennifer and Ken, said, "When we first went to this beautiful camp, we saw other blind campers achieving, enjoying activities, and navigating their surroundings. It really reduced our feelings of stress. It shifted how we thought about Henry's vision and his future. We were heartbroken to hear of the damage from the wildfires and hoped that it wouldn't be the end. And happily, Enchanted Hills reopened the very next summer even while the majority of rebuilding is still under way. We continue our support every year. Our hope is that the small support we provide will help other campers and their families."

82% students say that they have more confidence because of their participation in LightHouse programs.

92% students say that they are motivated to try new things because of LightHouse.

84% students say that they are better able to maintain day-to-day activities and interests because of LightHouse.

Enchanted Hills Camp for the Blind



Photo caption: red sunset over Lake Lokoya at Enchanted Hills Camp.

2019 was our 69th year of providing unparalleled programs for blind campers, and we have been busy:

- Enchanted Hills Camp for the Blind hosted ten different summer sessions in 2019.
- We had our largest ever teen camp session.
- Enchanted Hills welcomed campers from Poland, Australia, Puerto Rico and China, Dominican Republic, Japan, Mexico, Philippines, South Korea, Hungary, Turkey, Nicaragua and El Salvador.
- Music Camp rocked the world with a finale concert for several hundred audience members.
- Specialty camps in 2019: STEM Camp

and a much anticipated Facebook Coding Camp.

- We rebuilt the first permanent buildings since the wildfires: a storage barn, maintenance office, pool shade structure and two storage sheds.
- With the help of the Kiwanis Club of Greater Napa we rebuilt the Wing Creek Chapel, and built a new bridge with a Braille Rail to honor donors to the Wing Creek restoration.

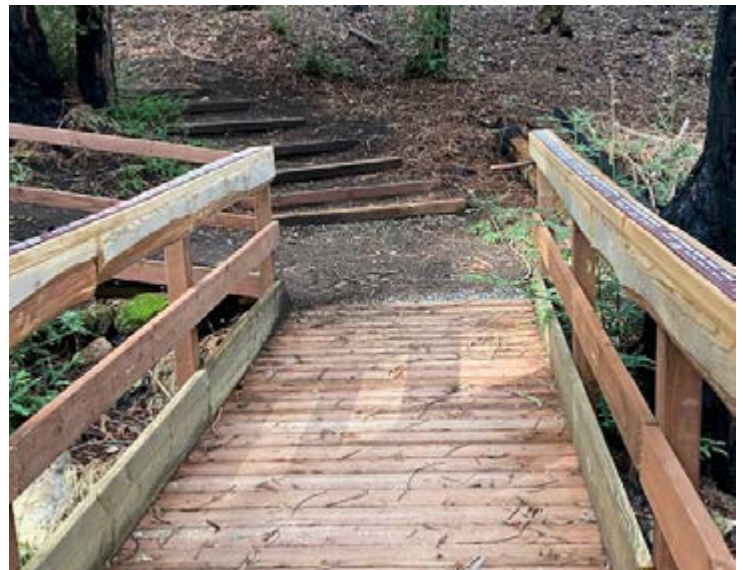


Photo caption: Braille Rail Bridge at EHC.

- Over 25 volunteer groups spent time at EHC in 2019 helping us with fire abatement, overall camp maintenance, fence repair, landscaping and other vital projects.

- Two AmeriCorps groups spent six weeks working on a variety of projects: rebuilding bridges and fences, trail maintenance, building new picnic tables, and painting, painting, painting!
- Enchanted Hills hosted 21 retreat rental groups.
- We dredged and aerated Lokoya Lake to make it cleaner and deeper and stocked it with over 3,000 fish.
- We broke ground on an eco-conscious new Pool Bath House with expanded shade structure built with reclaimed lumber from our own downed trees.
- We hosted the Pacific Division of the National Association of Blind Students' leadership retreat.



Photo caption: The group watches the beam being placed.

About Enchanted Hills Camp for the Blind



Photo caption: Sun rays spread through a cluster of trees at the Enchanted Hills Camp.

In 1950, Rose Resnick, a blind woman who credited her confidence and feelings of self-worth to her time spent at a camp for blind kids in the Adirondacks, founded Enchanted Hills – the first camp for the blind west of the Mississippi.

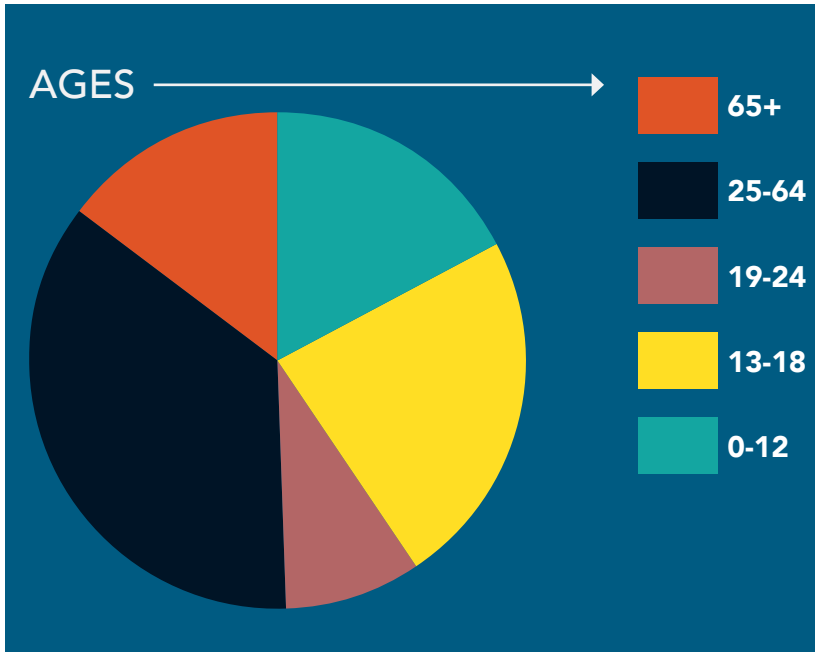
Located on 311 acres of redwood and mixed forest, Enchanted Hills provides a quintessential camp experience including hiking, horseback riding, archery, and swimming—a place where campers make lifelong friends and meet motivated, blind mentors. Over the years, more than 25,000 blind campers have benefited from Enchanted Hills' unparalleled programs.



Photo captions:

Image 1 – Group of volunteers at EHC during Volunteer Day walking with Enchanted Hills Director, Tony Fletcher. Photo by Sarika Dagar. **Image 2** – Group of youth campers on a trail at the EHC Health and Wellness event. Photo by Sarika Dagar. **Image 3** – A group of EHC campers getting ready for music camp performances. **Image 4** – A blind singer with his band performs during EHC music camp 2019 while a group of campers cheers him on in the background. **Image 5** – A blind drummer performs near Lake Lokoya during EHC music camp 2019. **Image 6** – A group of young campers gaze at redwood trees at EHC, all wearing their LightHouse sweatshirts for warmth.

EHC by the numbers: Numbers Show the Power of Camp



24,076
service hours



BLIND CAMPER: 486

EHC PROGRAMS IN 2019:

- Cycle for Sight
- Family Camp I and II
- Blind Babies Family Camp
- Deaf-Blind Session
- Adult Session
- Adults with Developmental Disability Session
- Youth Camp
- Teen Camp
- Music Camp
- Woodworking Camp
- STEM Camp
- FaceBook Coding Camp

EHC Camper Profile: Milo Kroh



Meet eleven-year-old camper Milo Kroh. He's been going to Enchanted Hills Camp for two years, and he loves it.

Photo caption: EHC camper Milo Kroh in front of a wall-sized tactile abstract painting by artist Alden Mason, located at LightHouse Headquarters. Photo by Sarika Dagar

Milo swam in the pool as often as he could, kayaked in the lake and enjoyed archery, where he knew his arrow had found its target when he heard the pop of a balloon, placed there for audible confirmation. He told us, "There aren't too many kids who are visually impaired at my school. At Enchanted Hills I'm just like everyone else."

"The staff love working with campers that bring enthusiasm, curiosity and playfulness to Enchanted Hills Camp and Milo Kroh is a camper that fits that picture perfectly. I feel strongly that this young man is going to make a difference in this world and we at EHC feel fortunate to be part of his journey towards independence," said EHC Camp Director, Tony Fletcher.

76% students say that they are more satisfied with their quality of life because of LightHouse.

66% students say that LightHouse is a place where they extend their community of blind friends, peers and mentors.

100% students would refer someone who is blind or who has low vision to the LightHouse.



Holman Prize for Blind Ambition

Now in its fourth year, LightHouse's Holman Prize for Blind Ambition is an international competition that is awarded annually to three blind individuals who wish to push their limits. It is named for James Holman, a nineteenth century blind explorer and author, who was the most prolific private traveler before the era of modern transportation.

In 2017, LightHouse for the Blind in San Francisco launched the Holman Prize to support the emerging adventurousness and can-do spirit of blind and low vision people worldwide. This endeavor celebrates people who want to shape their own future instead of having it laid out for them.

Created specifically for legally blind individuals with a penchant for exploration of all types, the annual Holman Prize for Blind Ambition provides financial backing – up to \$25,000 – for three individuals to explore the world and push their limits.

The ideal candidate is someone who is willing to probe their environment and eager to savor the richness of a world that is so often thought of as inaccessible to the blind. The Prize Winner embarks on an adventure of their choosing, which may involve travel, community organizing, athletics, scientific exploration, creating art and more. In addition to motivating blind individuals to realize their dreams, the purpose of the Holman Prize is to change the world's perception of blind ability.

2019 Holman Prize Winners



**Dr. Mona Minkara
(United States):**

Traveled to five international cities, independently navigated their public transit systems and documented this in a YouTube series called Planes Trains and Canes:

<https://www.youtube.com/channel/UCUAGEcdYLOD7x5hTDKmVoA>



**Alieu Jaiteh
(The Gambia):**

Alieu's project is focused on changing the perception of blind people in rural Gambia and providing training to eighty blind people living there.



**Yuma Decaux
(Australia):**

Made astronomy more accessible to blind people by visiting scientists around the world and documenting it in the Astrohunters podcast and through a mobile application, Asteros.

Photo captions left to right:

Image 1 – Close up of the United States' Mona Minkara holding yellow flowers. Photo by Sarika Dagar **Image 2** – Close up of Gambia's Alieu Jaiteh in Golden Gate Park. Photo by Sarika Dagar **Image 3** – Close up of Australian Yuma Decaux with Bay Bridge in the background.



Superfest is the longest running disability film festival in the world.

Superfest Disability Film Festival 2019 was held on October 12 and 13 at the Freight and Salvage in Berkeley and Contemporary Jewish Museum in San Francisco with sold-out crowds and a full roster of films from all around the globe. The festival featured a fantastic blind filmmaker who flew in from Washington D.C, Day Al-Mohamed, the creator of a documentary about the Invalid Corp who served during the Civil War.

Since it first debuted as a small Los Angeles showcase in 1970, it has become an eagerly anticipated international event. For more than 30 years, Superfest has celebrated cutting-edge cinema that portrays disability through a diverse, complex, unabashed and engaging lens. Superfest is one of the few festivals worldwide that is accessible

to disabled filmgoers of all kinds, and is an international leader for modeling accessibility, including open audio description, live captions for dialogue, audience-integrated wheelchair seating and chemical free and scent free areas.

Superfest Disability Film Festival continues as an integral program of San Francisco State's Paul K. Longmore Institute on Disability. For complete information about showcases of films throughout the year and the main festival, visit www.superfestfilm.com.

Superfest features:

- Open/closed audio description
- Open captions for all live dialogue
- ASL interpretation for all live dialogue
- Audience-integrated wheelchair seating

- Close-up seating for people with low vision
- Seating for people who are Deaf or hard of hearing in close proximity to an ASL interpreter and captioning
- Chemical free / scent free areas
- A quiet space
- Gender neutral restrooms
- Easy access to public transportation, including BART and MUNI
- Ramp access to stage
- Separate screening room without audio description



Photo captions left to right:

Image 1 – Cathy Kudlick, Director, Paul K. Longmore Institute on Disability and Christina Daniels, LightHouse Social Media Specialist presenting Superfest 2019 films. Superfest logo is projected onto the screen behind them. **Image 2** – A large group watching a film with various apparent and nonapparent disabilities. **Image 3** – A panel of three Superfest filmmakers on stage. **Image 4** – Someone reading Superfest 2019 schedule with LightHouse logo on the left page. Photos by Sarika Dagar

MEDIA AND ACCESSIBLE DESIGN LAB (MAD Lab)

From printed information to physical space, our [MAD Lab](#) specializes in making the visual tactile and turning inaccessible experiences into inclusive ones. Our team of designers and consultants specialize in braille, tactile maps, accessible venues and alternative media.

Year in Review:

Design and production of Apple Swift Playgrounds Tactile Puzzle Worlds; Building Graphics Literacy; Library of Congress NLS (in-place indoor floorplan maps), Disney (maps and droid schematics), Microsoft (outdoor wayfinding maps), Maryland Department of Transportation (system strip maps).

Total Projects by MAD Lab 2019

369 projects broken down into the following categories:

Design and Accessibility: consulting, tactile maps, graphics, 3D

78 projects

Consulting: ADA/CBC Sign Review

Inspection and Approval of 3,207 signs to ensure 2010 ADA & 2013 CBC compliance

Braille Translation

57,735 pages

Braille Business Cards

7,743 cards

Audio Recordings

19 recordings

Trainings, Workshops, and Presentations

11

TMAPs Distributed (Tactile Maps Automated Production)

1,284 TMAPs

ADAPTATIONS BLIND TECHNOLOGY STORE

[Adaptations](#) is the only place in Northern California with a comprehensive offering of tools, technology, and other solutions for blind and visually impaired people.

2019 Statistics

<u>Total number of items sold</u>	6,887
<u>Total number of transactions</u>	2,506
<u>Total number of customers</u>	2,445
<u>Number of unique customers</u>	1,376
<u>Number of items carried</u>	1,274



Photo captions :

Image 1 – A braille holiday card depicting a green, tactile printed dinosaur says 'Have a roaring good holiday!'.

Image 2 - White canes hang on the wall inside the Adaptations Store.

Image 3 – A blind woman holds a TMAP of a San Francisco neighborhood and explores the map with one hand. Photo by Sarika Dagar

THE SIRKIN CENTER

The Sirkin Center provides employment to blind employees in customer service, shipping and receiving, inventory management and light manufacturing. The Sirkin Center is a light-manufacturing plant making the tissue packets which are included in MREs (Meals Ready to Eat) utilized by soldiers, rescue workers, emergency rations and support for firefighters in the field and firefighters in the field. We also sell commercial-size sanitary paper rolls for use at camps, schools and other facilities, and a line of PRIDEClean chemical cleaning products.

In 2019 the Sirkin Center began bottling PRIDEClean products: non-toxic, green cleaning products used at private and public facilities around the country. The products contain no ammonia, phosphates, are biodegradable and contain zero to low VOCs.

The Sirkin Center also produces Skilcraft products with National Industries for the Blind and the Ability One Commission.

Packets of tissue produced in 2019 52,071,000

Line filled bottling in 2019 150,000 units

75 percent of the direct labor in our facility comes from blind employees.



Photo caption:
One thousand pound rolls of toilet paper await repackaging at the LightHouse for the Blind plant in San Leandro.

These prominent media sources published articles about LightHouse in 2019



In 2019 we worked with advocacy groups and organizations from across the nation.



American Printing House for the Blind, Inc.



WHO WE REACH

ACCESSIBILITY: We consulted and worked on tech and accessibility with companies all over the world.



JPMORGAN CHASE & CO.



Education



ASSETS

\$

Change in net assets from operations	1,728,505
--------------------------------------	-----------

Other Gains and Losses

Realized and unrealized gains(losses) on investments, net or fees	867,927
--	---------

Change in Net Assests	2,596,429
------------------------------	------------------

SUPPORT AND REVENUE

\$

Revenue

Sales, net of fees of \$87,326	3,078,213
Fees for service	1,491,684
Insurance reimbursements	1,429,373
Interest & dividend income	3,511,893
Miscellaneous and other	279,622

Total Revenue	9,790,785
----------------------	------------------

Support

Government contracts & other grants	1,827,341
Donations and bequests	1,879,158

Total Support	3,706,699
----------------------	------------------

Total Support & Revenue	13,507,284
------------------------------------	-------------------

OPERATING EXPENSES

Program Services	11,674,719
General and administration	2,485,568
Fundraising	1,075,502

Total Expenses	15,235,789
-----------------------	-------------------







Photo captions:

Image 1 – Two women smile for the camera in front of the Superfest screen.

Image 2 – Young EHC camper Andy Rodriguez and YES program specialist Ann Kwong smiling in front of the camera.

Image 3 – Employment Immersion director Kate Williams holding a pumpkin during Pumpkin Palooza cooking class.

Image 4 – LightHouse's Orientation and Mobility instructors outside City Hall during White Cane day.

Image 5 – Two people with their white canes stand under the LightHouse sign on Market street.

Image 6 – A group around a table discuss current technology during our Access Tech Trainer Conference.

Image 7 – Group of blind and low vision campers walking on a path at EHC with their white canes and guide dogs.

Image 8 – Group photo of smiling blind and low vision campers.

Image 9 – At the Adaptations store, a shopper touches the tactile map of a San Francisco neighborhood.

Image 10 – Changing Vision, Changing Lives participants learn low vision desk setup using products from the Adaptations store.

Image 11 – Students take their test during the Northern California Regional Braille Challenge, held at LightHouse Headquarters.

Image 12 – Students enjoy each other's company during the Northern California Regional Braille Challenge, held at LightHouse Headquarters.

Image 13 – Sun rays peaking through redwood trees while EHC volunteers work.

Photos by Sarika Dagar

DONORS

INDIVIDUALS – ORGANIZATIONS

\$100 - \$999

Anita Shafer Aaron and
Robert Scott Aaron
Jenny Adam
Judith and Douglas Adams
Louis Adams
John Alexander
Robert and Elaine Allen
Juan Alvarez
Adrian and Laura Amandi
Judi and Thomas Ambrosius
Kate Andersen
Roland M. Andersen
Harry and Judy Andrew
Raymond N. Applebaum
Linda and Anthony Ara
Radhika Arora
Sweta Arora
Elizabeth L. Ashley
Eileen Aste
Lynn Aurelio
Nadine and George Aurelio
Joseph Ayres
Margaret Azcona
Carol Bacchetti
Jim J. Baie
Gay Baldwin
Shirley Banks
Joan and John Barkan
Judy Barrett
Roger Barrow
Linda Barsotti
Ashley Barth
Bryan Bashin
Margaret Bayer
Steven Bayles
Jesse Beach
James and Patricia Beall
Elizabeth and Iraj Behseresht
Barrie Benson
Lisa Berger
Bryan and Barbara Bergsteinsson
Charmaine L. Berry
Joan Berry
Joyce Cid
William and Laura Cinquini
John and Mona Clements
Vicki Coe and R. Scott Mitchell
Christie and Stephen Coffin

Fern Cohn
Debbie Conlon
Patricia Corcoran
Sandra Cornell
Geraldine and Al Corvi
Constance and Dave Costa
Cary Courier
Kelley Cowan
Carla Crahan
Colleen Crahan McCarthy and
Lawrence McCarthy
Antoinette Craig
James Craig
Edward Craine
Elizabeth Cronin
Amy and Jeffrey Crowe
Kevin Cullinane
Dianne M. Curtis
Bonne Curtis-Leibee and Henry Leibee
Linda Dardarian
William and Jaci Daskarolis
Carol Davis
Lloyd E. Davis
Salvatore De Riso
Sarah DeLeon
Jagsimrat Dhillon
Constance Diernisse
BJ Dietz-Epstein
Danny and Ashley Dike
Loretta Dipboye
Elizabeth and Donald Dixon
Jeff Dixon
Robert and Kathryn Dodd
Zhao Dong
Jerome and Joanne Donovan
Greg Doolittle
Suzanne Dougan
Joan M. Dove
David Drinkhouse
David Dryer
Talbert Dsouza
Alma Duran
Kelli Dutto
Crystal Dykstra and Tiffany Bush
Amanda Ebey
Jerry and Laura Edwards
Joseph Ehrman III
Christine England
Shayna Eskew
Randy Evangelista
Carrie Farber
Cindy and Marty Fassler

DONORS

Rob Feckner and Deborah Jachens
Lewis J. Feldman
Alex Fiannaca
Pamela Fischer
Diana and Drew Fitzpatrick
David and Vicki Fleishhacker
Anthony Fletcher and Elizabeth Sapien
Veronica Fluken
Laura Fogg
Kathleen Folks Martin
Phillip R. Foster, Jr.
Marina Franco
Julia S. Frank
Cathy Freese and D.R. Gillis
Patty Freitas
Vicki Friedberg
Buthina Frikert
Don and Peggy Fromm
Jim Fruchterman
Michael Fucciolo
Phyllis Fullmer
Jonathan Funk
Frank Gaetz
Dominic Gagliano
Holly Galbrecht
Catania C. Galvan
Ernest Galvan
Denise Galway
Jim and Kyra Gammon
Amey Garber and Richard Lesnick
Pam Gardner
Dyke Garrison
Mengisteab Gebrehiwot
Dean M. Genes
William and Ann Gerard
Lisa and Jory Gessow
Lesley Gibbons
Myra and Brent Gifford
Kathleen Gilbert
Margaret E. Ginsburg
Aric Gitomer
Stanton and Marsha Glantz
Frank Golbeck
Rose Golden
Rolando Gomez
Phillip Gordon and Philippa Newfield
Marie Gravelle
Debra Greenstein
Eva Gregoratos
Irene and Barry Grenier
Herbert and Lenore Griffin
Mitchell Grubman

Wendy Grus
Susan and Leonard Gugick
Joan and Joseph Guidetti
Angela and Mark Gundlfinger
Juan Gutierrez
Jean Guttman
Joshua and Kalpana Guttman
Mary Gwynn
Miki and Larry Hakim Tolchin
Mark Hall
Philip and Susan Hammer
William Hammond
Kathleen Hamon-McGee and
Kevin McGee
Pamela Handman
Wendy Hardy
Dorothy Harkavy
Harriet Harris
Phillip and Julie Harris
Arthur Hartman
John Hays
Mayela Heacock
Reiko Healman
David Heglund
Alan Hencky
Michael Henderson
Shawn Henning
Luther and Crystal Hermano
Austin Hertell
Mr. and Mrs. Richard Hesse
Dallas Hickle
Jefferson Hill
Michelle and Kenneth Hill
Paul Hill
Elaine Hilp
Kit and Linda Hinrichs
Karen Ho
Julien Hoffman
Mickey Hoffman
Tim Hohne
Susan Holt
Dana Hooper and Alicia Swanson
Erin Horne
Mona Horst
Amy J. Hosa
Evan Hughes, Jr. and Linda Craig
Kevin Hughes
Harold and Janet Hunt
Nicholas Hurlburt
Jeremy Hwang
Norma Ingalls
Frederick J. Isaac

DONORS

Jack D. Jackson
Phillip Jai
Randolph James
Kara Janssen
Brian and Patricia Johnson
Gil and Becky Johnson
Kent and Linda Kaiser
Roger Kallen
Barry and Shirley Kaminsky
Margaret Kane
Heli Kangas
Rosemary and Daniel Kaplan
Robert and Janet Kates
Susan R. Katz-Snyder
Julie Kaufman
Mary and Lester Kaye
Brian Kennedy
David and Judith Keyes
Kay Khin
Cynthia King
Joel King
John and Mary Kirlin
Jeanne Kirsch
Anmarie Kladis
Helene Klein
Julie Klein
Melanie Kneisel
Perla and Harvey Kohs
Thomas and Dorothy Komnick
Martin Krasney
William Kreysler
Debbi Krukonis and Vincent Peloso
Ralph and Carol Kuiper
Deslar Kyn Patten
Scott LaBarre
Elizabeth Laflamme
Marc Lambert
Rob Lanz
Mr. and Mrs. James LaPlante, Jr.
Kenneth and Sylvia Larkin
Judith Lasky
Barbara J. Lassen
Erin Lauridsen
Christie Lebaudour Moore
Nancy D. Lee
Eileen Lemus
Anthony Lenzo
Linda J. Leonard
Janice Leong
Lori Lerner-Edwards
Wallis and Harry Leslie
Dr. Robert G. Levenson

Dan and Evelyn Levin
Marc Levin, M.D.
N. Jean Edge Levins
Stephen Lindbeck and Martha Ginsburg
Jeff Lombardi
Andres Lopez-Pineda
Peter Lovecchio
George and Svetlana Lozovik
Gabriel Lucas
Sarah Lucas
Renee Luenow
Min Ma
David and Mary Maas
Berenice Magistretti
Michael and Mary Lynn Maguire
Eric and Jacalyn Mah
Robert and Patricia Maines
Mike and Laura Malone
Robert Manning
Diane Marchut
Hiram Marinas
Nancy Marshall
Gina Marsili
Janet A. Martin
Angela and Art Martyn
Ruth Masonek
Shirley Matteson
Michael May
Steve and Patty Mayer
Matt Mayes
Sharon Mayo
Dr. Elliot E. Mazer and Mrs. Trudy Mazer
David and Rose McCallen
Laurene Wu McClain
Tony and Linda McClimans
Elizabeth McDonald
Cliff McElrea
Kevin McGee and Kathleen Hamon-McGee
Harry McGuire
Richard McIntosh
Allene McIntyre
Terry and Maria McKellips
Peter Medina
Denise Meggs
Kevin and Kimberly Menninger
Jack and Coralee Mermod
Hans and Edith Merten
Karen Meryash
Spencer and Roberta Michels
Charles and Dorothy Michelsen
Mr. and Mrs. Daniel Miller
Harrell Miller

DONORS

Lorraine B. Miller-Wolf
Dianne Millner
Kenneth J. Mills, M.D.
Marian Mittler
Linda Montgomery and Roy Hahn
Davia M. Moore
Susan Moore Klawitter
Paul V. Morris
Anna M. Morrison
Paul Morrow
Philip Mucenski
Lee Murdock
Breda Murphy
James J. Murphy
Rosemary Murphy
Robert and Lynne Myers
Marie Myszkowski
Matthew and Leslie Nathan
Joseph Navarro and Lucia Aguilar-Navarro
William Nelson
Karen Nemsick
William and Janet Nicholls
Andrea Nielsen
Amy Noland
Germaine and Wendell Norwood
Varda Novick
Michael Nunez
Robert and Martha Obeso
Robert E. O'Donnell
Sam Ogami
Andrea and Greg Ogarrio
Doni and Sean Ogarrio
Greg Ogarrio
Daniel O'Grady
Helge and Birgitta Olsen
Henrik and Elodie Olsen
Brian O'Melveny
Sile O'Modhrain
Janise On
Roger and Teresa On
Alicia Onadja
Vicki and Laurence Oppenheim
John O'Reilly
Richard Oswald
Susan O'Toole
Charlene and Leo Ott
Anne Otte
Gina and Chris Ouellette
Kenneth Pacini
Mr. and Mrs. Michael Pack
Ellen and Michael Parker
William Jorge Pearce

David Pearson
Eric Peden
Rachel Perkins
Camille and Kevin Peterson-Steege
Shirley R. Petrak
Michael Pezone
Lillian Phan
Hnin Phwe
Elizabeth Pierre
Bobbi Pompey
Edward Porche
Thomas and Cathleen Prieto
Mary Prochnow
Maure Quilter
Eric and Nicole Radkiewicz
Alicia and Edward Ramirez
Frances Rapin
Miranda Rathbone
Charles and Patricia Raven
Maya Razon
Barbara and Sally Reiter
Judith Reynolds
Jason Roberts
Bill and Marilyn Robertson
Andrea Robinette
Vikki Rodriguez
Edwin and Elizabeth Roland
Joseph and Donna Rollins
Dennis and Linda Ronberg
Steven and Susan Rosen
Peter and Beth Rosenthal
Thomas Ross
Frances Rothenberg
Steven Rothstein
Debbie and Leonard Roudman
Paul and Holly Rubinstein
Michael and Julie Rudinoff
Patrick and Miriam Ryan
Mr. and Mrs. Eugene W. Rzym
Jennifer Sachs and William Maggs
Loren Sacks
Dorothy Salmon
Eryk Sanchez Mata, Jr.
James and Lea Sandman
Buzz Sapien
Daniel Sapien
Graciela Tiscareno Sato
Craig Sayers
Michele Scafani
Patricia and Ed Scarboro
Karen Scaruffi
Dr. Richard Schaar

DONORS

Helen Schneider
 Martin and Jeanne Schneider
 David Schoenfeld
 Tracy Schulze
 Daniel M. Schwartz, M.D.
 Janna A. Scopel
 Lauren and Mark Scott
 Matthew Sell
 Elisabeth Semel
 Priam Sen
 Lynne Sentivany
 Rita Seymour
 Anna and Stanley Shaff
 Vartan Shahinian and Raymond Nolen
 Lucille Shanahan
 Halima Shenghur
 John Simmons
 William E. Simpson, Jr.
 Rebecca and Matthew Singer
 Chander Singh
 Benjamin Singleton
 Yue-Ting Siu
 Igor Skaredoff
 Dr. Howard M. Slyter and Ms. Marjorie E. Ginsburg
 Thomas F. Smegal, Jr.
 Marty Smith
 Michael Snow
 Shamly Sohal
 Andrew Solari
 Terri Sonoda
 Tina Sonoda
 Janet Spicer
 Michele Spitz
 Robert Spotts and Herbert Taxton
 Eric Stauffenegger
 Kevin Steege and Camille Peterson-Steege
 Judie and David Stepner
 Juliet Stewart
 Leslie Stewart and Paul Kern
 Wayne Stoker
 Deborah Stone
 Robert and Michelle Stowell
 Frank Stuhler
 Peggy and C.G. Suckow
 Constance and George Sutton
 Evelyn Szelenyi
 Geoff Tabin
 Ted Tawshunsky
 Louise and Jack Tayan
 Bruce Taylor
 Elizabeth Taylor
 Cosmo Tedeschi

Clara Ann Tennis
 Victoria and George Thacher
 Vrishali Thorat
 Clifford Thornell
 Richard Tidd
 Arthur Tonelli
 Oliver Tse
 Daniel Tsirulnikov
 David Turner
 Patti Birge Tyson
 Robert Tyson
 Kathy and Michael Uhl
 Dr. Mark Ulitsky
 Lois Umeda-Madden
 Jane Unger and Joseph Nezwiek
 Lida Urbanek
 Rawal Utpal
 Tammy Van Valkenburgh
 Dorothy and Albert Vasquez
 Prindle Vaux
 Jeffrey and Lori Veliquette
 Alan Venook and Carolyn Small
 Nhon Vuong
 Leanne Walgren
 Brian and Gigi Walker
 Dirk Walvis and Carolyn Dille
 Anne Ward
 Rosemary Watson
 Meredith Weaver
 Erik Weihenmayer
 Roseanne Werth
 Dorothy H. Wesley
 Roger Wickstrom and Petrina Grube
 Rebecca Williford
 Patricia Willis and Anthony Knettel
 Angela Wilson
 Patricia Wilson
 Stuart and Donna Wittenstein
 Bik Yue Wong and Navin Wong
 Bobby Wong
 Joanna Wong and Ching Chuen Wong
 Hobie Woods
 Debra Wright
 Robert and Nancy Wright
 Anna and Ian Wroblewska
 Julie Wyman
 Janice Wyrick and Andrew Ho
 Judith and Jerold Yecies
 Lawrence and Gwendolyn Yee
 Doug Yule
 Gary and Linda Zellerbach
 Rebecca and Richard Zeren
 Alla and Victor Zeyliger

DONORS

Dieter Zirkler
 Mr. and Mrs. Simon Zisman
 Roy Zitting
 Michael Zucksworth
 Adleson, Hess & Kelly
 AmazonSmile Foundation
 Andersen Tax
 Apollo Lodge 123 IOOF
 Ara Enterprises LLC
 AT&T Employee Giving Campaign
 Autodesk Foundation
 Bank of America Charitable Foundation
 Employees
 Bay Area Development Company
 Boeing
 California Council of the Blind -
 San Francisco Chapter
 CSB RocketShop
 Demand Construction Services, Inc.
 Deutsche Bank Americas Foundation
 Electronic Scrip Incorporated
 Fil-Am Friendship Network (FAFNET)
 Gap, Inc.
 Give With Liberty - Liberty Mutual Foundation
 Match
 Gracefully Global Group LLC
 IBM Employee Services Center
 Irvine Company
 Jewish Family and Children's Services
 LaBarre Law Offices, P.C.
 Lakeside Presbyterian Church Board of Deacons
 Law Offices of Michael P. Kade
 Lawrence Livermore National Laboratory
 Mattingly Low Vision, Inc.
 Morgan Stanley Global Impact Funding Trust
 Napa Valley Petroleum, Inc.
 One Market Restaurant
 PG&E Campaign for the Community
 RVK, Inc.
 Santen Incorporated
 Saratoga Lions Club
 SF Mix
 Steve Erdmann Gardening Service
 Sutter Home Winery
 Target
 Truist/Frontsream
 Unitarian Universalist Congregation, Santa Rosa
 United Way - California Capital Region
 Women of the Moose No. 1714

\$1,000 - \$9,999

Jason Affourtit

Laura and Peter Allen
 Jose Azevedo
 Sylvia Barata
 Brian and Cindee Beirne
 Ron Beller and Jennifer Moses
 Douglas E. Bergman
 Richard Boardman
 Dan and Cindy Boyett
 Michael and Julie Brown
 Lindsey Bruel
 Marie Anne Burkhard
 Lisa Carvalho and David Mager
 Joseph Chan
 Amy Chen
 Mr. and Mrs. Michael Child
 Linda Cox-Myers and David Myers
 Timothy Culler and Ellen Bermingham
 Sandy and Joe Dalli
 Susan and Andrew Dawson
 Michael and Leslye Dellar
 Kirk and Tamara Dittmar
 Sean Mark Divarco
 Debra and Mark Dommen
 Chris and Rosa Downey
 Joyce M. Dubay
 Barbara Eddy
 Signe Erickson
 Gail and James Finnegan
 Marjorie Follette
 Nancy Foss
 Adam Fritz
 Candice and Jesse Gomez
 Ryan Gregory
 Marge Haggin
 Gena Harper
 David and Debra Harrison
 Nancy K. Hayes
 Eugenia H. Haynie
 Ronda Head
 Brian Helmick
 Fred and Virginia Herzer
 Dwight Johnson
 Mr. and Mrs. Ronald L. Kahn
 Andrew Kebbel
 Roberta Kehret
 Jody Kelman
 Judd Klement
 Queenie Kroh
 Susan Lapin and Kenneth Ward
 Audrey Lasson
 Michael F. Marmor, M.D.
 Francis McNulty

DONORS

Jane and Robert Micks
 Joshua Miele and Elizabeth Ruhland
 Tarak Mody
 Joseph Nezwiek
 Margaret Niland
 Bill Norton
 John Ogle
 Susan O'Sullivan
 Jane Page
 Ian and Sue Paget
 Tom and Stephanie Perrett
 Peter Pfau and Kim Starr
 Luciana Profaca
 Anne Roberts
 Frank Rothacker
 Fred Ruhland
 Patrick Ryss and Abbey Myszka
 Sharon and Richard Sacks
 Laith Salma
 Riyadh Salma
 Elyse Salven-Blatt
 Donald Schaefer
 Richard and Monica Schoenberger
 James Schwartz and Anneliese Magnelia
 Mamie Scott
 Michael and Carole Shebanek
 Moira Shek
 Sigrid and James Snider
 Todd Stevenot and Anne Sandbach
 Richard Stevens and Virginia Behm
 Nancy Swan
 Kong Taing
 Heath Thomson and Nicole Perlroth Thomson
 Charles and Elizabeth Travers
 Jason Venable
 Marco A. Vidal Fund
 Rob and Carolyn Von Behren
 Carmen Rose Wayson
 David and Regula Weill
 Joy and David West
 Daniel Willhite
 Alice Wingwall and Donlyn Lyndon
 Henry and Sandra Wong
 Stanley Yarnell and Victor Rowley
 Bonnie and David Young
 Albert and Teresa Zobrist
 Adobe - Your Cause
 Alice Phelan Sullivan Corporation
 America's Best Local Charities
 Apple, Inc
 Bellini Foundation
 Business Links, Inc.

Charis Fund
 Charles Schwab Corp
 Chateau Montelena Winery
 Comcast
 Confraternity of Our Lady of Grace
 Core Financial Corporation
 Dave Young Electric, Inc.
 Dean & Margaret Leshner Foundation
 Diablo Valley Industrial Claims Association
 Disability Rights Advocates
 Dodge & Cox Investment Managers
 Eventbrite
 Facebook
 Fidelity Brokerage Services LLC
 First Dollar Foundation
 Fontanella Family Winery
 Gary D Nelson Associates, Inc.
 Genentech Foundation
 George Lucas Family Foundation
 Guide Dogs for the Blind
 Havian & Jarvis Charitable Fund
 Hireup
 Humboldt Area Foundation
 Humboldt Health Foundation
 IBM Retiree Charitable Campaign
 Iglewski Family Foundation
 Interpodia Technology Corp
 Kawakami Barron & Lam, LLP
 Kinship Trust Company LLC
 Kiwanis Club of Davis
 Kurland Family Foundation
 LinkedIn Matching Gifts Program
 Marin Community Foundation
 Medtronic
 Mel & Grace McLean Foundation
 Merchants Exchange Club
 Morgan Stanley
 Mutual of America Life Insurance Company
 N.D.G.W. Childrens Foundation
 National Arts and Disability Center, Semel Institute
 Omidyar Network
 Pacific Gas and Electric Company
 Patson Management Company
 PG & E Corporation
 Polara Enterprises, LLC
 Ride Napa Valley LLC
 Ross Stores Foundation
 Rotary Club of Napa
 S.A. Camp Companies
 Sadie Meyer and Louis Cohn Foundation
 Salesforce Foundation
 Samsung Electronics North America

DONORS

San Jose East Valley Lions Club
 St. John's Episcopal Church
 Strandberg Engineering
 Susan Zirkl Z L Memorial Charitable
 Foundation Trust
 Telecare Corporation
 The Excel Fund
 The Marmor Foundation
 The North Face Explore Fund
 The Palisades Educational Foundation, Inc
 The San Francisco Foundation
 The Travers Family Foundation
 The University Corporation, SF State
 TouchPoint Foundation
 Trinity Properties
 Turner Construction Company Foundation
 U.S. Bank
 UBS Donor-Advised Fund
 Vanguard Charitable
 Volkswagen Group of America, Inc.
 Walter E. and Barbara A. Bauke Foundation
 Welfund Family Foundation
 Wright Family Charitable Fund

\$10,000 - \$24,999

Ronald and Lois Bloom
 Jennison Asuncion
 Jane D. Bennett
 Ken and Jennifer Bunt
 Lois Feldman Bloom and Ronald Bloom
 Jerry A. Kuns
 Bernard Newcomb
 John Wilhelm and Tora Isi
 Bennett Family Donor Advised Fund
 Charitable Adult Rides & Services, Inc. (CARs)
 Cruise Industry Charitable Foundation
 DeLong-Sweet Family Foundation
 Delta Gamma Foundation
 Eva L. McKenzie Memorial Fund
 Fidelity Charitable Gift Fund
 Marie H. Brookreson Trust
 Renaissance Charitable Foundation
 Syar Foundation
 The Annunziata Sanguinetti Foundation
 The Benevity Community Impact Fund
 The Peter A. and Vernice H. Gasser Foundation
 The Walt Disney Company Foundation
 United States Association of Blind Athletes
 Wells Fargo Foundation
 Wells Fargo Philanthropy Fund
 Western Digital Corporation Fund

\$25,000 – \$34,999

Maurice and Herman Herbst
 Philanthropic Fund
 Mr. and Mrs. G. Kirk Swingle
 Foundation
 Melvyn I. Mark
 Jewish Community Federation
 and Endowment Fund
 Silicon Valley Community Foundation
 Schwab Charitable

\$50,000 – \$99,999

Comcast NBCUniversal Foundation

\$100,000+

Herbst Foundation, Inc.
 Napa Valley Community Foundation

ESTATES

Thomas Dutra
 Emma A. Eversole
 Ferris W. Hartman
 James Michener
 Phyllis K. Miller
 Dohma L. Roberts
 Alicia Jean Rose
 Rolph-Nicol Trust
 John G. Searle
 Donald Sirkin
 Frank W. Stockton
 E.B. Storrow
 Emma G. Trebilcot
 Dorothy M. Walker
 Lillie Wissman
 William W. Witney

LEGACY SOCIETY (Supporters who have included the LightHouse in their estate plans.)

Hank Boerenko
 Lisa Carvalho and David Mager
 Joseph Chan
 Margie Donovan
 Joan M. Dove
 Lewis J. Feldman
 Robert Ray Foster
 Jonathan Funk
 Walter Howard Girdlestone
 Gena Harper
 Beulah May Higgins

DONORS

Dolores Ippolito
 Roger Kallen
 Justin Kim
 Deborah F. Kirker
 Judith Kuhnle
 Inez E. Martini
 Marjorie McWee
 Betty M. Mignacco
 Ann Noble and Goran Muhlert
 Robert E. O'Donnell
 Theresa Postello and Jerry Kuns
 Alicia Jean Rivera Rose
 Frederic and Kristine Silva
 Richard Stevens and Virginia Behm
 Clyde and Margaret Stone
 Dorothy M. Walker
 David and Regula Weill
 Martin and Rosan Weissman
 Jennifer Westbrook
 Greg Wong

LONGEVITY SOCIETY **(Supporters who have given 30 or more gifts over time.)**

Alice Phelan Sullivan Corporation
 America's Best Local Charities
 AT&T Employee Giving Campaign
 Bank of America Charitable Foundation
 Employees
 Bellini Foundation
 Charitable Adult Rides & Services, Inc.
 Electronic Scrip Incorporated
 Facebook
 Fidelity Charitable Gift Fund
 IBM Employee Services Center
 IBM Retiree Charitable Campaign
 Jewish Community Federation and Endowment Fund
 Mr. and Mrs. G. Kirk Swingle Foundation
 PG & E Corporation
 Schwab Charitable
 SF Park Presidio-Sunset Lions Club, Inc.
 The Annunziata Sanguinetti Foundation
 The Benevity Community Impact Fund
 The San Francisco Foundation
 Truist/Frontsream
 United Way Monterey County
 United Way of the Bay Area
 Wells Fargo
 Anita Shafer Aaron and Robert Scott Aaron
 Laura and Peter Allen
 Max H. Allen

Italo Amerio
 James Arbios
 Elizabeth L. Ashley
 Jim J. Baie
 Peter and Judi Bank
 Sylvia Barata
 Dr. and Mrs. Richard B. Barrick, M.D.
 Jane D. Bennett
 Douglas E. Bergman
 Arthur H. Bernstein
 Joan Berry
 Bernhard H. Bittner
 Paul Blaney
 William and June Bowen
 Neil H. Brandt
 Laura J. Bredemeier
 Mary Jo Broderick
 Doris B. Brodie
 Lonnie M. Brown
 Jean Bucaneg
 James L. Buhler
 John and Gale Bunnell
 Anselmo and Alma Caballero
 Lisa Carvalho and David Mager
 Joseph Chan
 Joyce Cid
 Ann Coleman
 Barbara Conheim
 Geraldine and Al Corvi
 Bernard Damele
 Lance and Billie Darin
 Dolores Davi
 Carol Davis
 Dorothy Dito
 Margie Donovan
 Leslie K. Doughty
 Chris and Rosa Downey
 Joyce M. Dubay
 Layton M. Duffy
 Joseph Ehrman III
 Richard T. Ellebrecht
 Ursula B. Farfel
 Lewis J. Feldman
 Olivia Fiel Peralta and Oscar Peralta
 Anthony Fletcher and Elizabeth Sapient
 Jennie Fong
 Joyce L. Fong
 Nancy Foss
 Robert Ray Foster
 Denise Freinkel
 Herbert and Annette Gershen
 Candice and Jesse Gomez

DONORS

Herbert and Lenore Griffin
 Leslie R. Guggenheim
 Patricia and Greg Gump
 Jean Guttman
 June Harman
 Gena Harper
 Eugenia H. Haynie
 Jacqueline M. Hendren
 Helen Jean Henke
 Wayne and JoAnne Herman
 Steven R. Hibshman
 Elaine Hilp
 Erin Horne
 Annette D. Howitt
 Carolyn and Irvin Howlett
 Frederick J. Isaac
 Dwight Johnson
 Gil and Becky Johnson
 Robert M. Kane
 Rosemary and Daniel Kaplan
 Ilene and Gary Katz
 Susan R. Katz-Snyder
 Max C. Kirkeberg
 Jerry A. Kuns
 Marianne J. Larimore
 Lieselotte Le Baron
 Norma and Dennis Libby
 Cara and John Lisica
 Andres Lopez-Pineda
 David and Mary Maas
 Lisamaria Martinez and Joseph Bakker
 Fredrika D. May
 Sean McGee
 Hans and Edith Merten
 Brian Messina
 Mary A. Montgomery
 Vivian Mullaney
 Carolyn F. Mulliken
 Mr. and Mrs. Donald Munakata
 James R. Murphy
 Robert and Lynne Myers
 Diane and Robert Neuhaus
 Trang Nguyen
 Juan Ocampo Gomez
 Robert E. O'Donnell
 Helge and Birgitta Olsen
 Vicki and Laurence Oppenheim
 Florence M. Paraventi
 Maja Jean Peters
 Ted Prim
 Luciana Profaca

Robert Rakshys
 Alicia and Edward Ramirez
 Joseph and Donna Rollins
 Madeleine S. Rose
 Florence M. Rusk
 Nancy A. Russ
 Jennifer Sachs and William Maggs
 Janna A. Scopel
 Vartan Shahinian and
 Raymond Nolen
 Stephen and Joanne Shapiro
 Timothy and Mary Sheehy
 Gladys Shegoian
 Kenneth and Jean Shelley
 Leslie Sheppard
 Randi Slaughter-Broussal
 Henry H. Small
 Thomas F. Smegal, Jr.
 John A. Sproul
 Gerald G. Stangl
 Todd Stevenot and Anne Sandbach
 Charles and Matilda Stewart
 George and Helene Strauss
 Ted Tawshunsky
 Clifford Thornell
 Robert Tyson
 Prindle Vaux
 William H. Vederman
 Joseph and Margaret Ward
 Sisi Weaver
 David and Regula Weill
 Gary and Yaffa Weinstein
 Betty Jean Weiss
 Shelia O. Whittemore
 Roy Zitting



Photo caption: A group of LightHouse staff and supporters gathered outside San Francisco City Hall on White Cane Day, holding their white canes and a LightHouse Banner. Photo by Sarika Dagar

With the strength of kind donors and supporters, we are empowering the blind community, designing innovative programs and expanding our reach across California and beyond. Please consider a donation to support LightHouse for the Blind and Enchanted Hills Camp.

We will rebuild EHC better and stronger!

To contribute directly to rebuilding Enchanted Hills Camp following the destructive fire of 2017, please contact our Director of Development at at **415.694.7333** or **jsachs@lighthouse-sf.org**.

:LIGHTHOUSE:
FOR THE BLIND AND VISUALLY IMPAIRED

1155 Market St., 10th Floor | San Francisco, CA 94103

P: 415. 431.1481 **VP:** 415. 255. 5906

Learn more about what we do: **www.lighthouse-sf.org**

Together we're better!